

OKLAHOMA DEPARTMENT OF TRANSPORTATION					
FED. ROAD DIST. NO.	STATE	JOB PIECE NO.	FISCAL YEAR	SHEET NO.	TOTAL SHEETS
	OKLA.				
DESCRIPTION			REVISIONS		DATE

NOTE:
ALL REFERENCE POINTS ARE 1/2" IRON PINS UNLESS OTHERWISE NOTED ON SURVEY.

NW CORNER - ODOT STA. No. K-38-778 - FOUND 3/8" IRON PIN IN ASPHALT AT THE APPROXIMATE INTERSECTION OF THE CENTERLINE OF NS-2120 & EW-1310 ROADS.

NORTH 1/4 CORNER - ODOT STA. No. K-38-779 - SET 1/2" IRON PIN WITH "CA3949" CAP AT EQUIDISTANT & ON LINE BETWEEN THE NW CORNER & THE NE CORNER OF SECTION 3.

NE CORNER - ODOT Sta. No. K-38-780 - CORNER FALLS IN CREEK (CORNER NOT SET) SET 1/2" IRON PIN WITH "CA3949" CAP AS A REFERENCE POINT BEING 50.00 FEET SOUTH OF SAID CORNER.

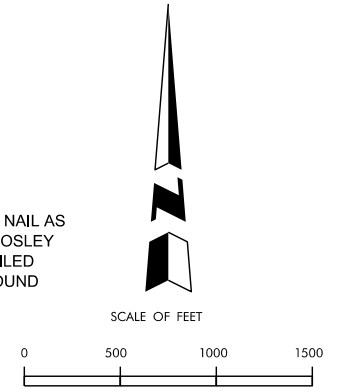
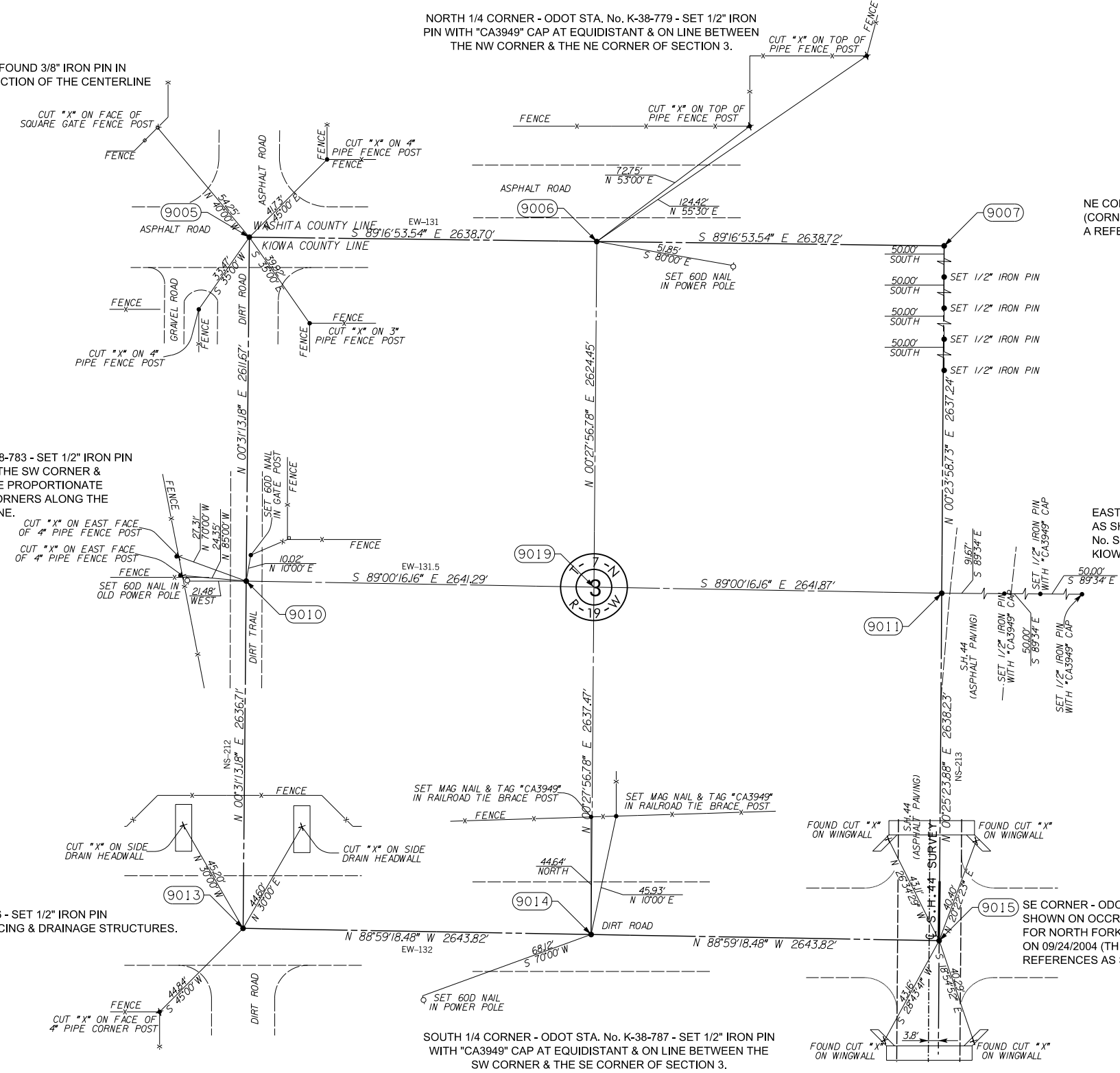
WEST 1/4 CORNER - ODOT STA. No. K-38-783 - SET 1/2" IRON PIN WITH CA3949" CAP ON LINE BETWEEN THE SW CORNER & THE NW CORNER OF SECTION 3 AT THE PROPORTIONATE DISTANCE AS APPLIED ON CLOSING CORNERS ALONG THE NORTHERN TIER OF THE TOWNSHIP LINE.

EAST 1/4 - ODOT STA. No. K-38-784, FOUND 1/2" IRON PIN AS SHOWN ON PLANS FOR "FEDERAL AID SECONDARY PROJECT No. S-413(3) (S.H.) PART-1 & PART-2, STATE HIGHWAY No. 44, KIOWA & WASHITA COUNTIES DATED 03-31-1950

SW CORNER - ODOT STA. No. K-38-786 - SET 1/2" IRON PIN WITH "CA3949" CAP PER EXISTING FENCING & DRAINAGE STRUCTURES.

SOUTH 1/4 CORNER - ODOT STA. No. K-38-787 - SET 1/2" IRON PIN WITH "CA3949" CAP AT EQUIDISTANT & ON LINE BETWEEN THE SW CORNER & THE SE CORNER OF SECTION 3.

SE CORNER - ODOT Sta. No. K-38-788 - FOUND MAG NAIL AS SHOWN ON OCCR PREPARED BY RANDY WAYNE MOSLEY FOR NORTH FORK SURVEYING & DRAFTING, INC. FILED ON 09/24/2004 (THIS CORNER AGREES WITH ALL FOUND REFERENCES AS SHOWN ON OCCR).



NOTE: REFERENCE'S SHOWN ARE NOT TO SCALE.

PLS	CRS	12/12	OKLAHOMA DEPARTMENT OF TRANSPORTATION SURVEY DIVISION SMITH ROBERTS BALDISCHWILER, LLC 100 N.E. 5th Street Oklahoma City, OK 73104 Telephone: (405) 840-7094 Fax: (405) 840-5916 SURVEY DATA SHEET
DRAWN	TDL	12/12	
CHECKED	JAC	12/12	
APPROVED	CRS	12/12	
CREW	BC, SG, BH	SWO 4836 (1)	